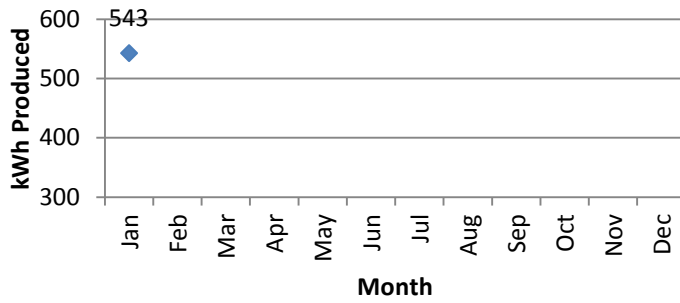


# 2012 Solar & Wind Turbine Data

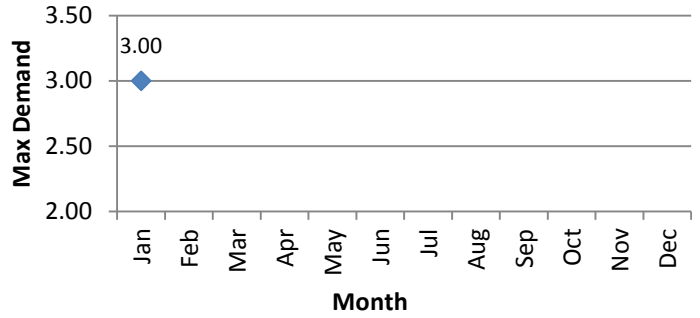
## 3.7 kW Solar Located near Rocky Ford, Colorado

Solar capacity equals approximately 2701 kilowatt hours per month

Kilowatts Generated by Month for 2012



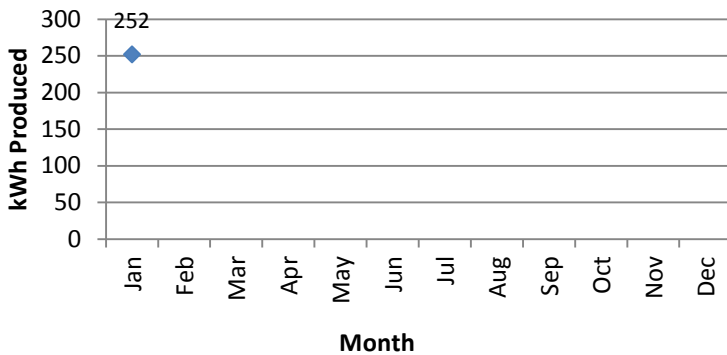
Max Demand Generated by Month for 2012



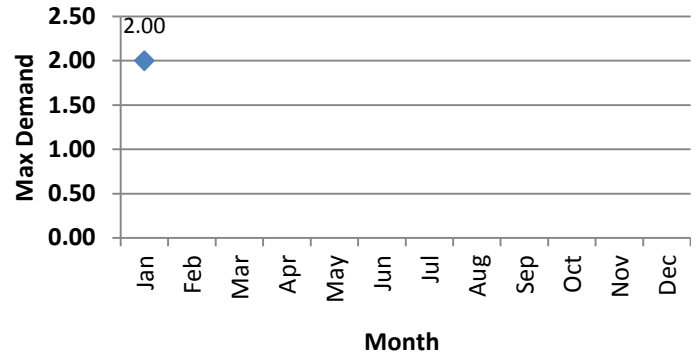
## 1.9 kW Wind Turbine Located near Springfield, Colorado

Turbine Capacity equals approximately 1387 kilowatt hours per month

Kilowatts Generated by Month for 2012



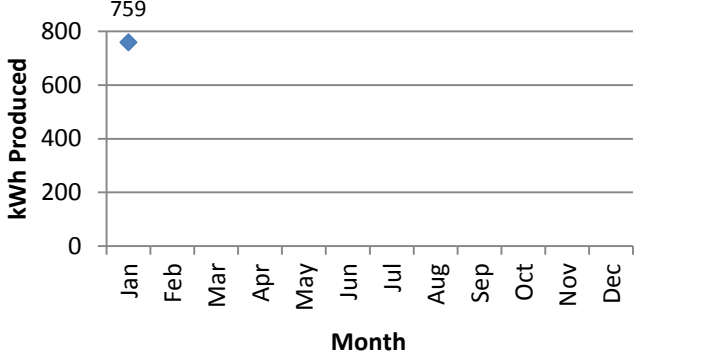
Max Demand Generated by Month for 2012



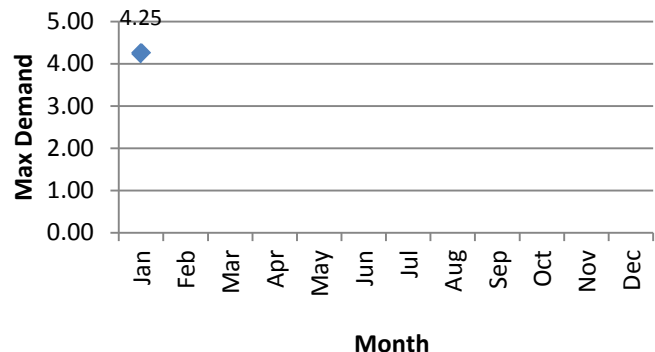
## 5 kW Wind Turbine Located near Walsh, Colorado

Turbine Capacity equals approximately 3650 kilowatt hours per month

Kilowatts Generated by Month for 2012



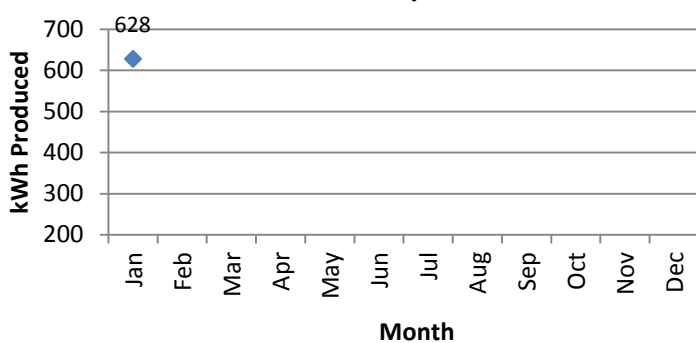
Max Demand Generated by Month for 2012



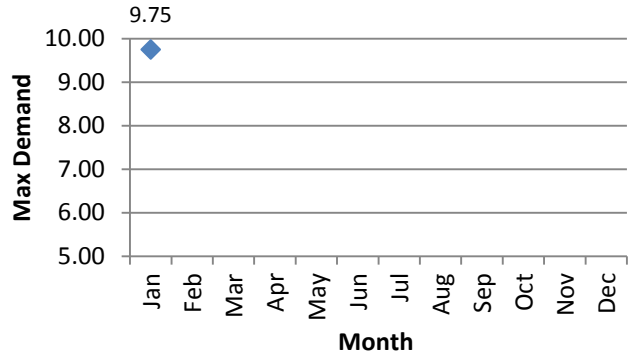
## 10 kW Wind Turbine Located near Haswell, Colorado

Turbine Capacity equals approximately 7300 kilowatt hours per month

Kilowatts Generated by Month for 2012



Max Demand Generated by Month for 2012

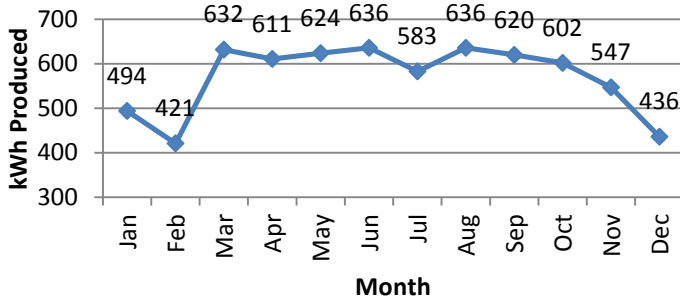


# 2011 Solar & Wind Turbine Data

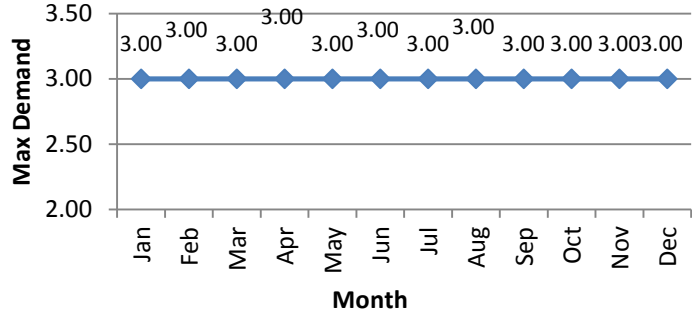
## 3.7 kW Solar Located near Rocky Ford, Colorado

Solar capacity equals approximately 2701 kilowatt hours per month

Kilowatts Generated by Month for 2011



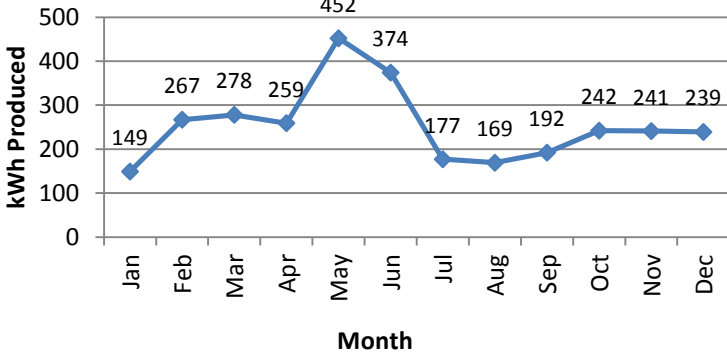
Max Demand Generated by Month for 2011



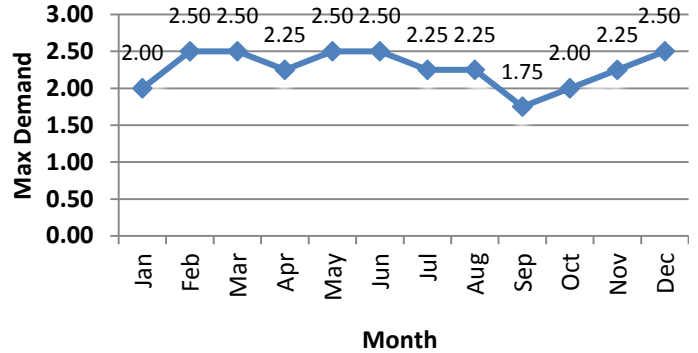
## 1.9 kW Wind Turbine Located near Springfield, Colorado

Turbine Capacity equals approximately 1387 kilowatt hours per month

Kilowatts Generated by Month for 2011



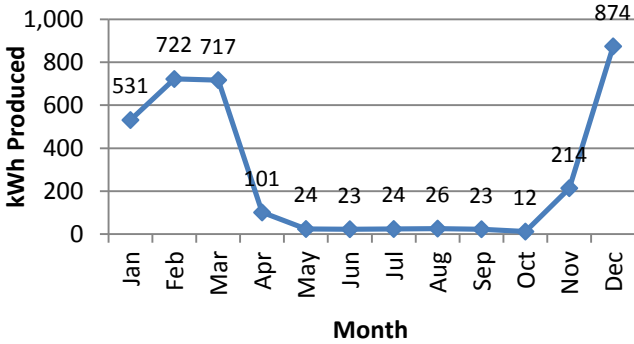
Max Demand Generated by Month for 2011



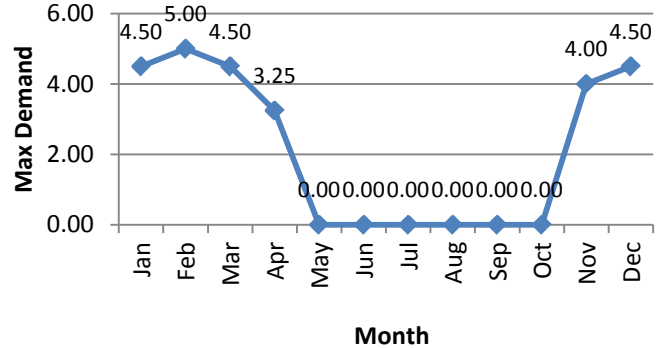
## 5 kW Wind Turbine Located near Walsh, Colorado

Turbine Capacity equals approximately 3650 kilowatt hours per month

Kilowatts Generated by Month for 2011



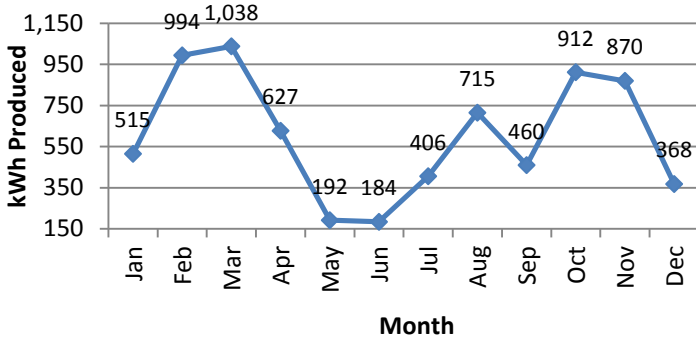
Max Demand Generated by Month for 2011



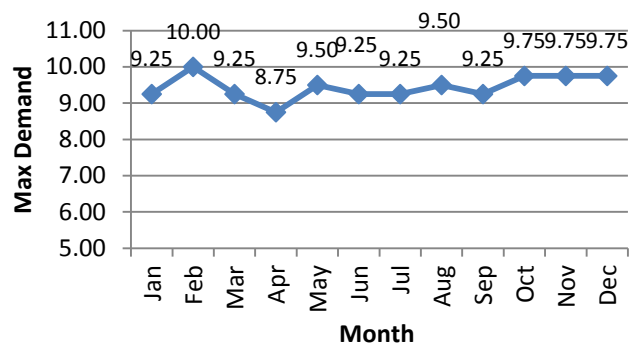
## 10 kW Wind Turbine Located near Haswell, Colorado

Turbine Capacity equals approximately 7300 kilowatt hours per month

Kilowatts Generated by Month for 2011



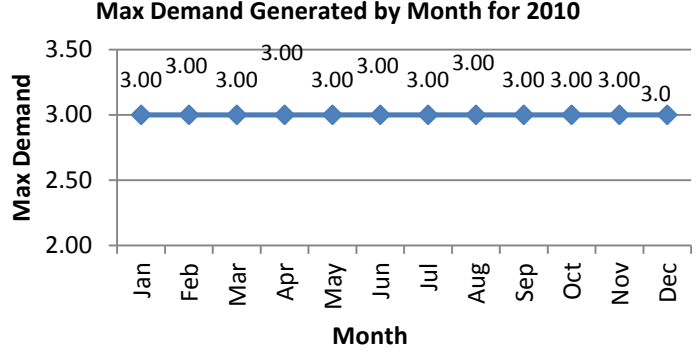
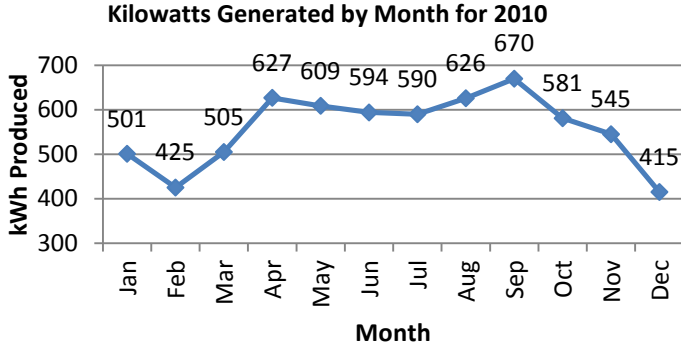
Max Demand Generated by Month for 2011



# 2010 Solar & Wind Turbine Data

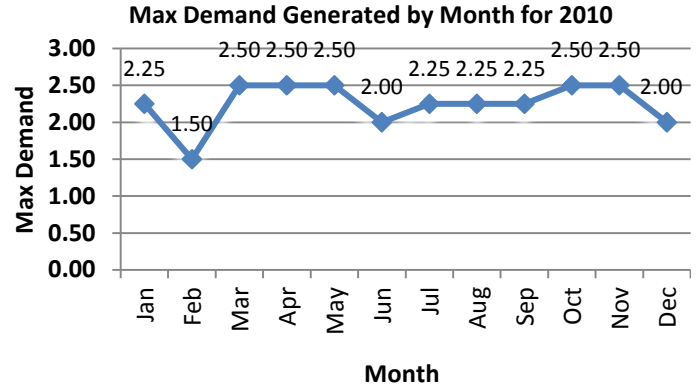
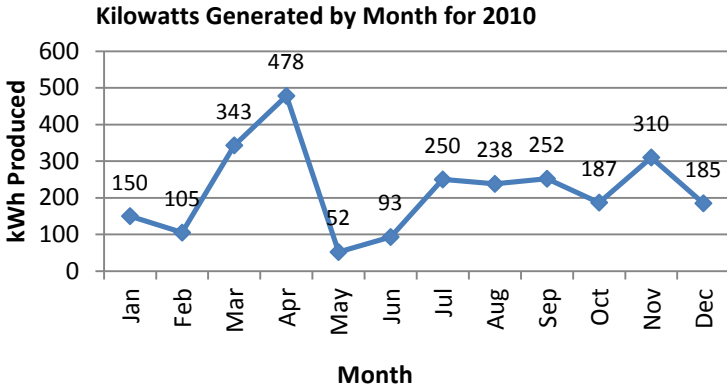
## 3.7 kW Solar Located near Rocky Ford, Colorado

Solar capacity equals approximately 2701 kilowatt hours per month



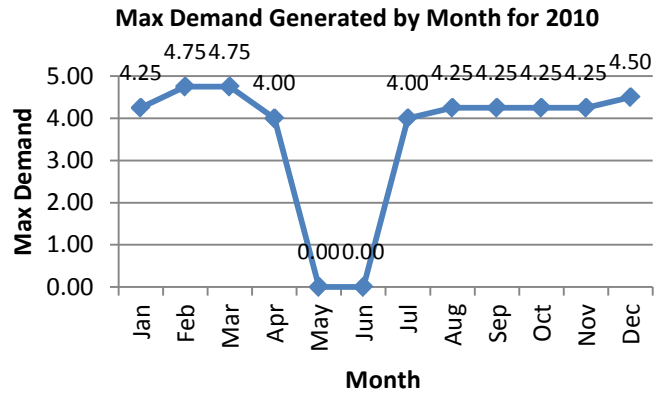
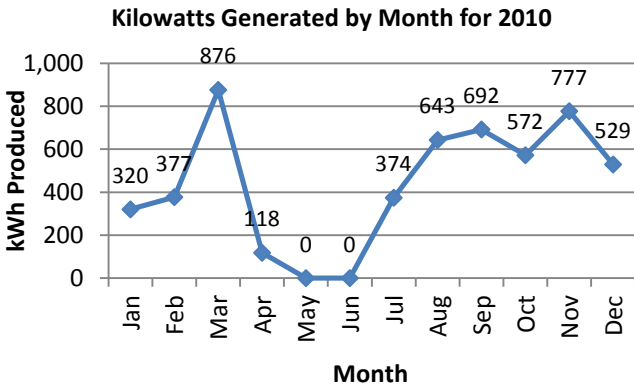
## 1.9 kW Wind Turbine Located near Springfield, Colorado

Turbine Capacity equals approximately 1387 kilowatt hours per month



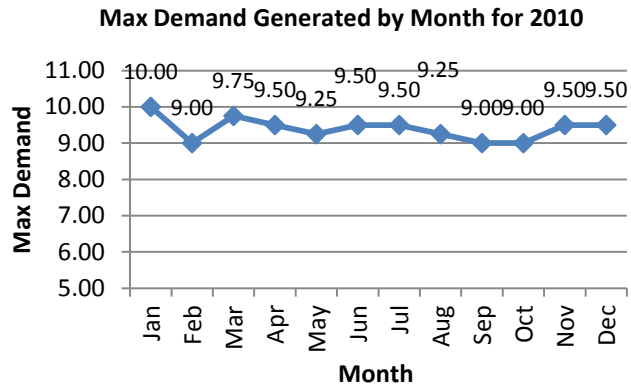
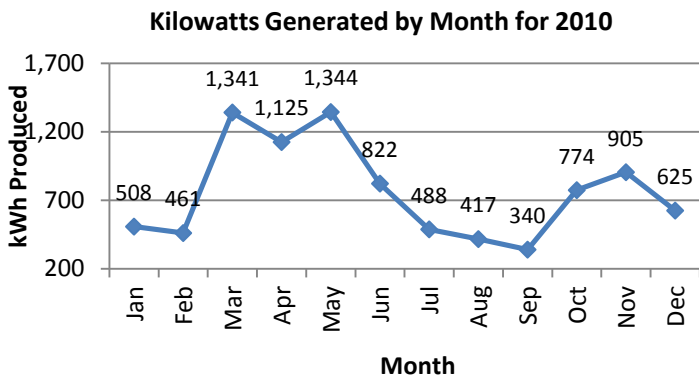
## 5 kW Wind Turbine Located near Walsh, Colorado

Turbine Capacity equals approximately 3650 kilowatt hours per month



## 10 kW Wind Turbine Located near Haswell, Colorado

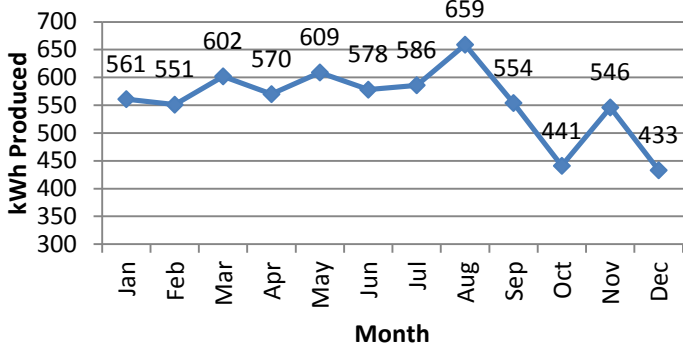
Turbine Capacity equals approximately 7300 kilowatt hours per month



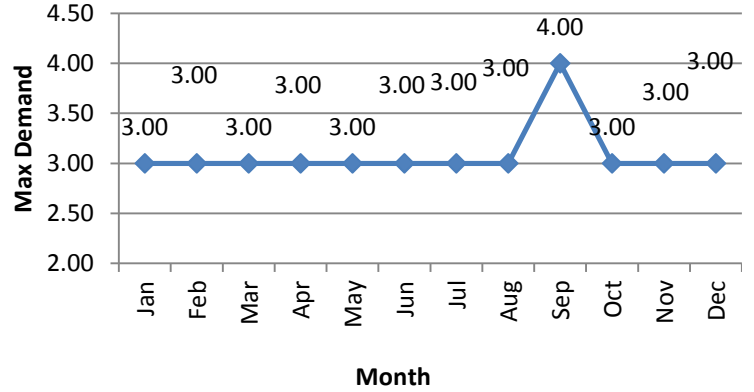
# 2009 Solar & Wind Turbine Data

**3.7 kW Solar Located near Rocky Ford, Colorado**  
**Solar capacity equals approximately 2701 kilowatt hours per month**

**Kilowatts Generated by Month for 2009**

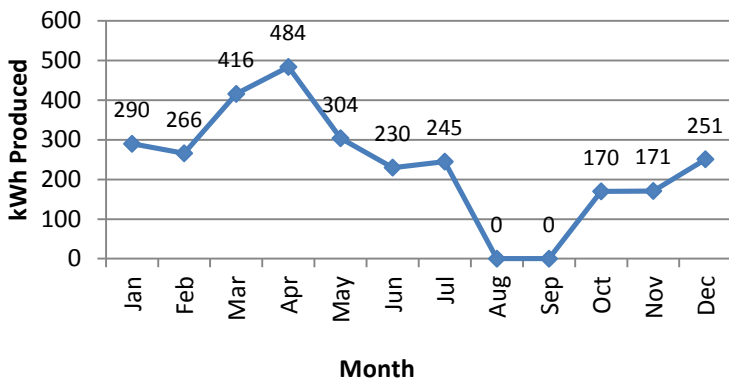


**Max Demand Generated by Month for 2009**

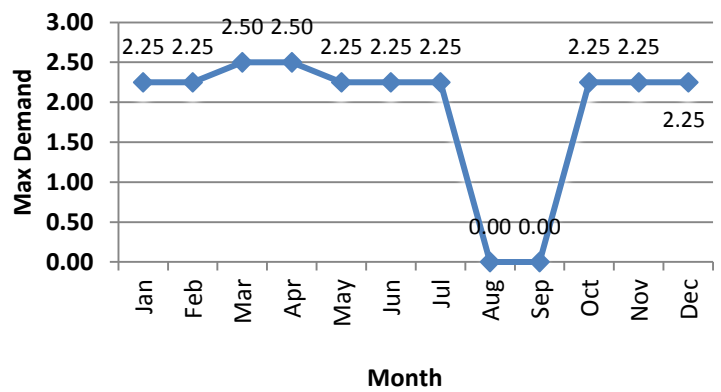


**1.9 kW Wind Turbine Located near Springfield, Colorado**  
**Turbine Capacity equals approximately 1387 kilowatt hours per month**

**Kilowatts Generated by Month for 2009**

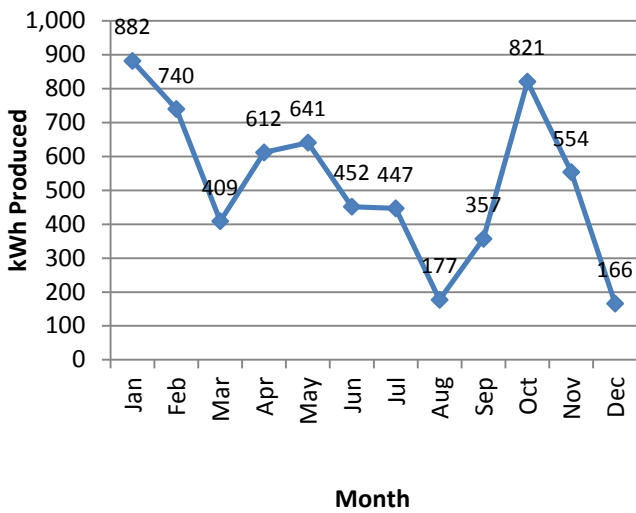


**Max Demand Generated by Month for 2009**

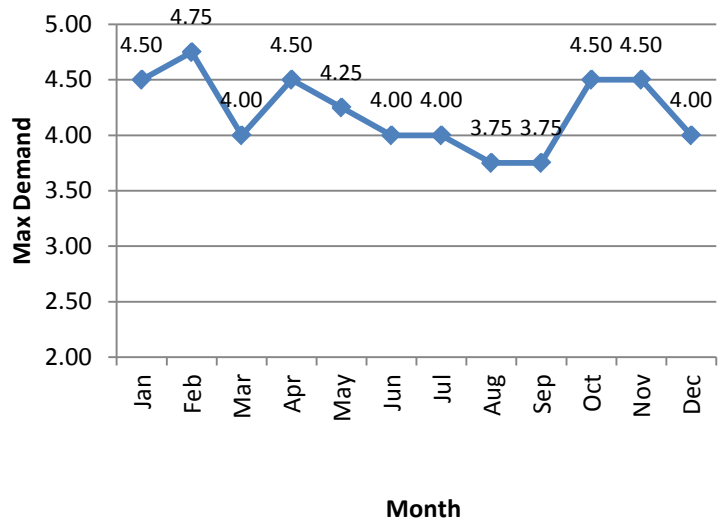


**5 kW Wind Turbine Located near Walsh, Colorado**  
**Turbine Capacity equals approximately 3650 kilowatt hours per month**

**Kilowatts Generated by Month for 2009**

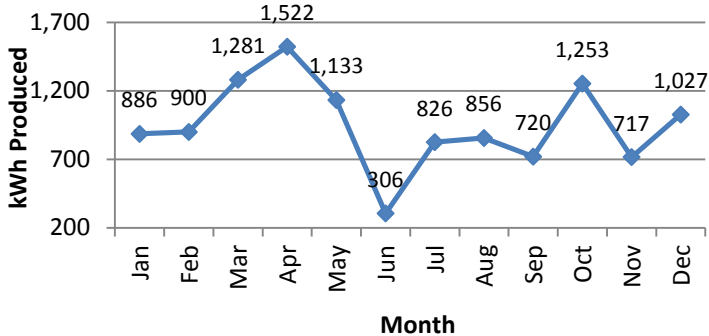


**Max Demand Generated by Month for 2009**

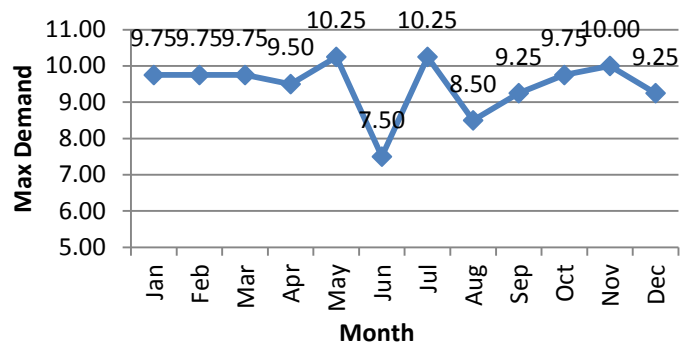


**10 kW Wind Turbine Located near Haswell, Colorado**  
**Turbine Capacity equals approximately 7300 kilowatt hours per month**

**Kilowatts Generated by Month for 2009**



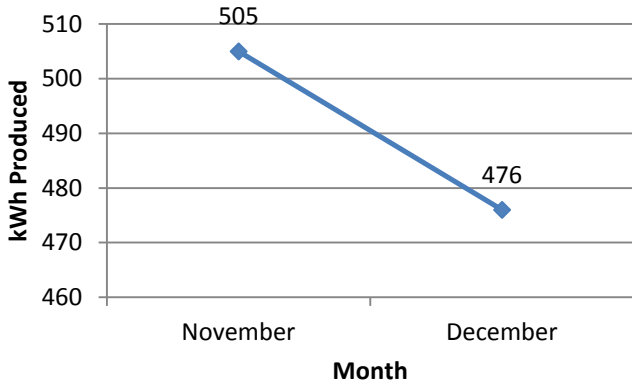
**Max Demand Generated by Month for 2009**



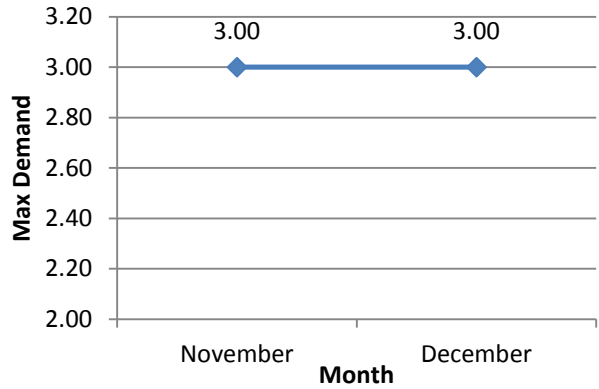
# 2008 Solar & Wind Turbine Data

**3.7 kW Solar Located near Rocky Ford, Colorado**  
**Solar capacity equals approximately 2701 kilowatt hours per month**

**Kilowatts Generated by Month for 2008**

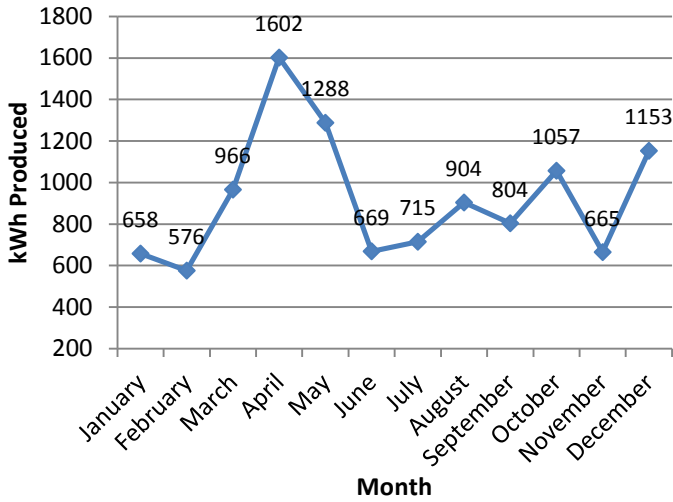


**Max Demand Generated by Month for 2008**

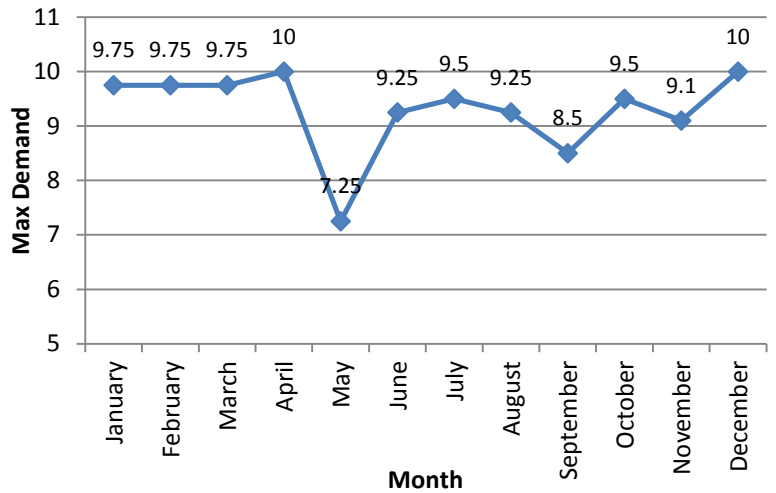


**10 kW Wind Turbine Located near Haswell, Colorado**  
**Turbine Capacity equals approximately 7300 kilowatt hours per month**

**Kilowatts Generated by Month for 2008**



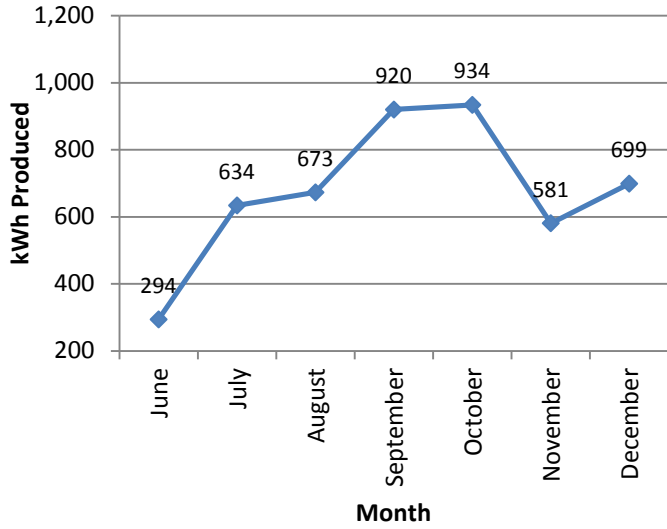
**Max Demand Generated by Month for 2008**



# 2007 Wind Turbine Data

**10 kW Wind Turbine Located near Haswell, Colorado**  
**Turbine Capacity equals approximately 7300 kilowatt hours per month**

**Kilowatts Generated by Month for 2007**



**Max Demand Generated by Month for 2007**

