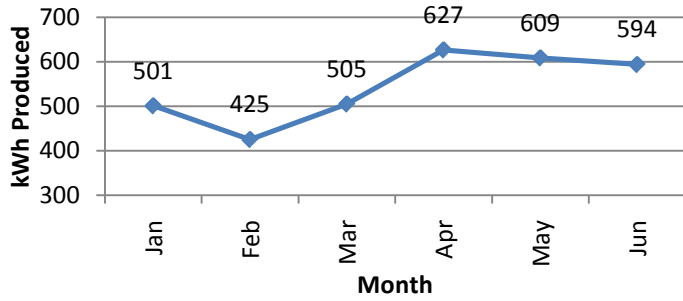


2010 Solar & Wind Turbine Data

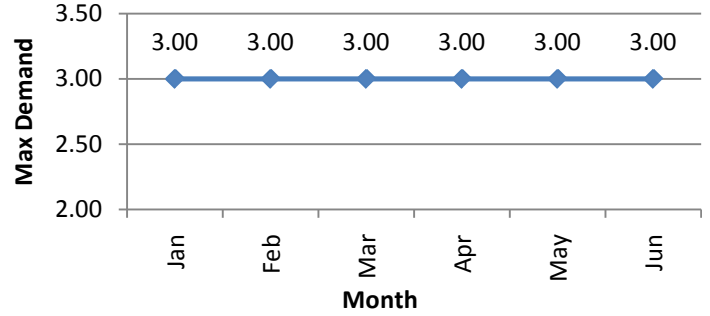
3.7 kW Solar Located near Rocky Ford, Colorado

Solar capacity equals approximately 2701 kilowatt hours per month

Kilowatts Generated by Month for 2010



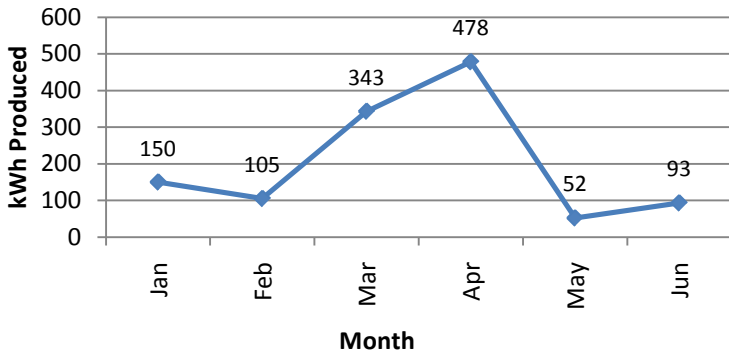
Max Demand Generated by Month for 2010



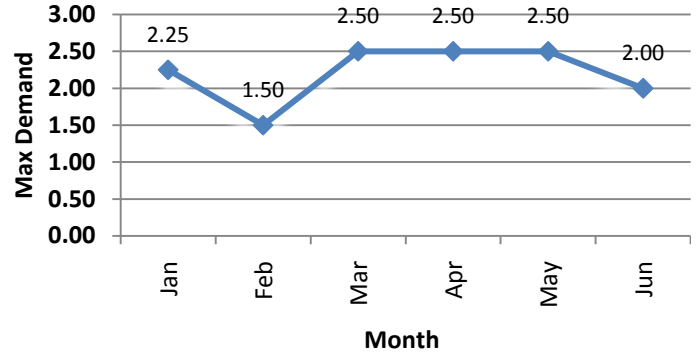
1.9 kW Wind Turbine Located near Springfield, Colorado

Turbine Capacity equals approximately 1387 kilowatt hours per month

Kilowatts Generated by Month for 2010



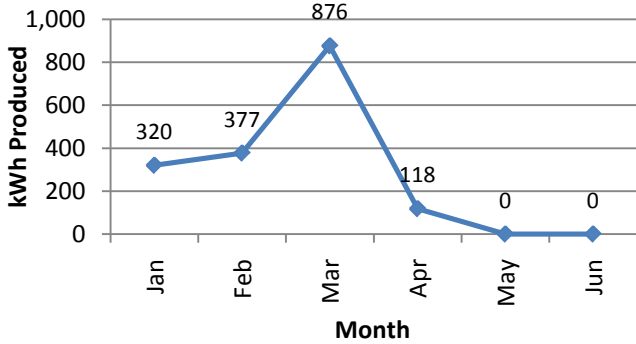
Max Demand Generated by Month for 2010



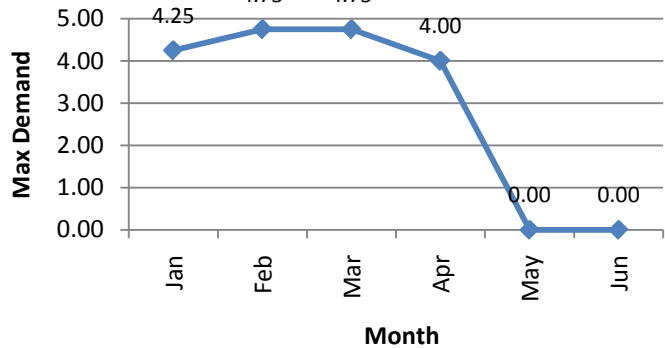
5 kW Wind Turbine Located near Walsh, Colorado

Turbine Capacity equals approximately 3650 kilowatt hours per month

Kilowatts Generated by Month for 2010



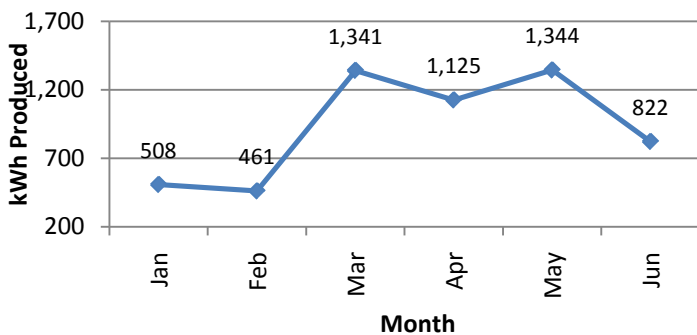
Max Demand Generated by Month for 2010



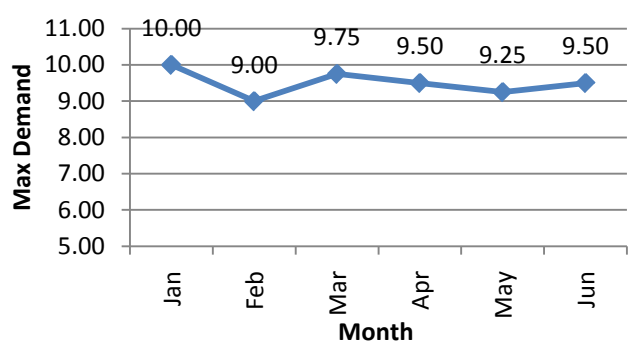
10 kW Wind Turbine Located near Haswell, Colorado

Turbine Capacity equals approximately 7300 kilowatt hours per month

Kilowatts Generated by Month for 2010



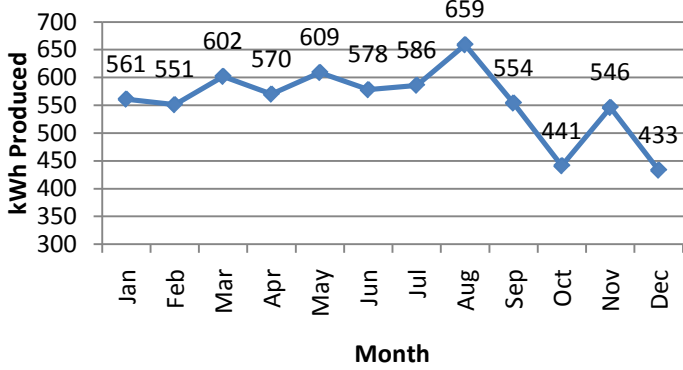
Max Demand Generated by Month for 2010



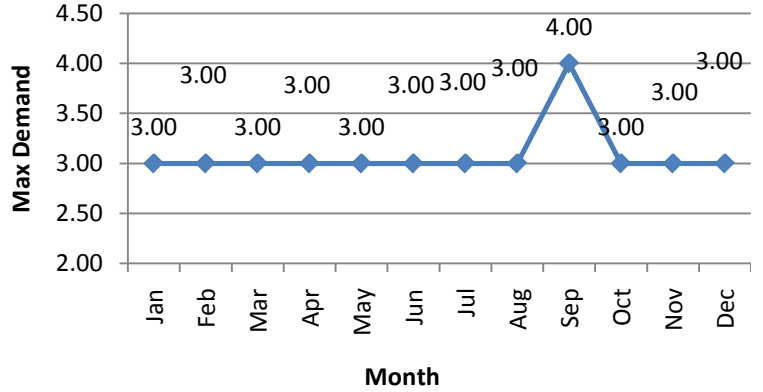
2009 Solar & Wind Turbine Data

3.7 kW Solar Located near Rocky Ford, Colorado
Solar capacity equals approximately 2701 kilowatt hours per month

Kilowatts Generated by Month for 2009

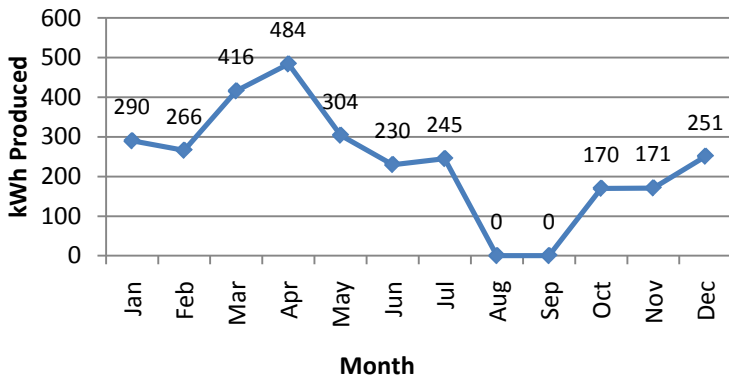


Max Demand Generated by Month for 2009

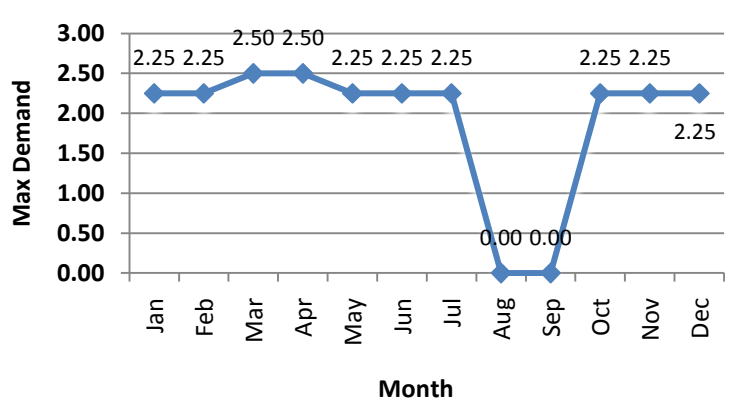


1.9 kW Wind Turbine Located near Springfield, Colorado
Turbine Capacity equals approximately 1387 kilowatt hours per month

Kilowatts Generated by Month for 2009

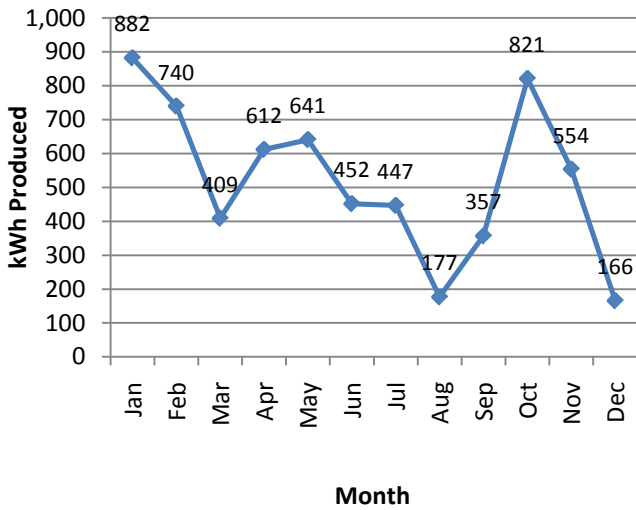


Max Demand Generated by Month for 2009

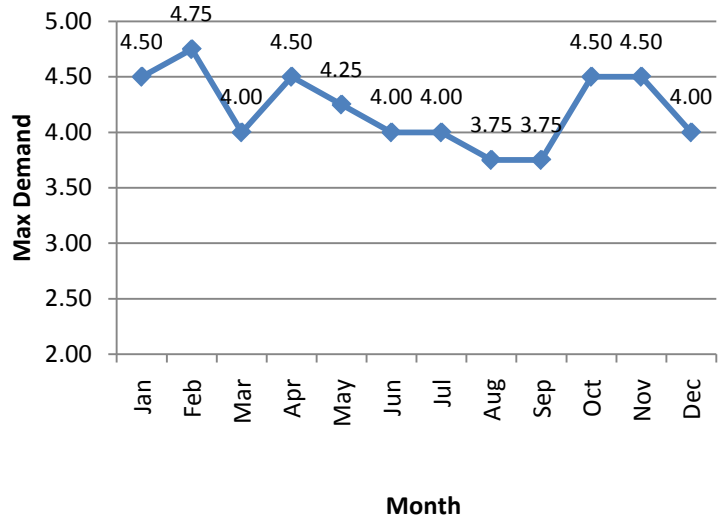


5 kW Wind Turbine Located near Walsh, Colorado
Turbine Capacity equals approximately 3650 kilowatt hours per month

Kilowatts Generated by Month for 2009

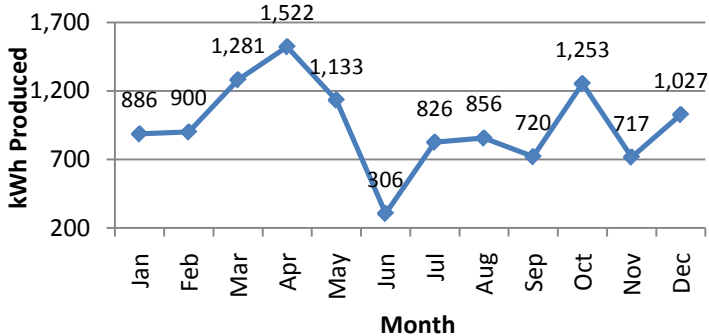


Max Demand Generated by Month for 2009

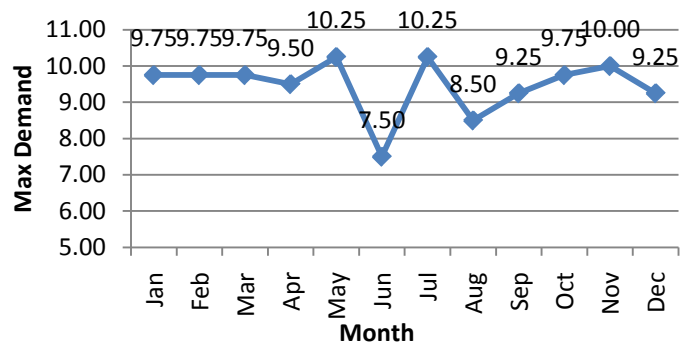


10 kW Wind Turbine Located near Haswell, Colorado
Turbine Capacity equals approximately 7300 kilowatt hours per month

Kilowatts Generated by Month for 2009



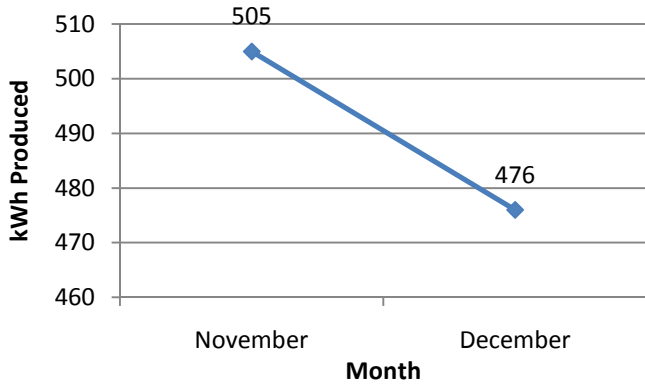
Max Demand Generated by Month for 2009



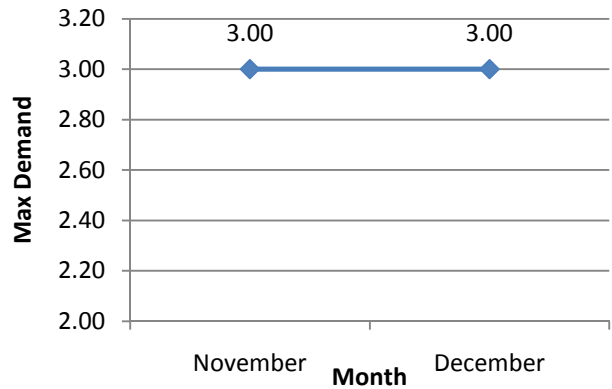
2008 Solar & Wind Turbine Data

3.7 kW Solar Located near Rocky Ford, Colorado Solar capacity equals approximately 2701 kilowatt hours per month

Kilowatts Generated by Month for 2008

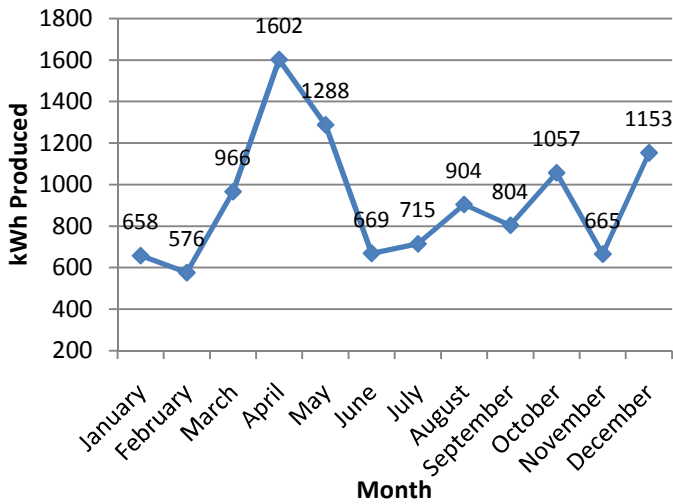


Max Demand Generated by Month for 2008

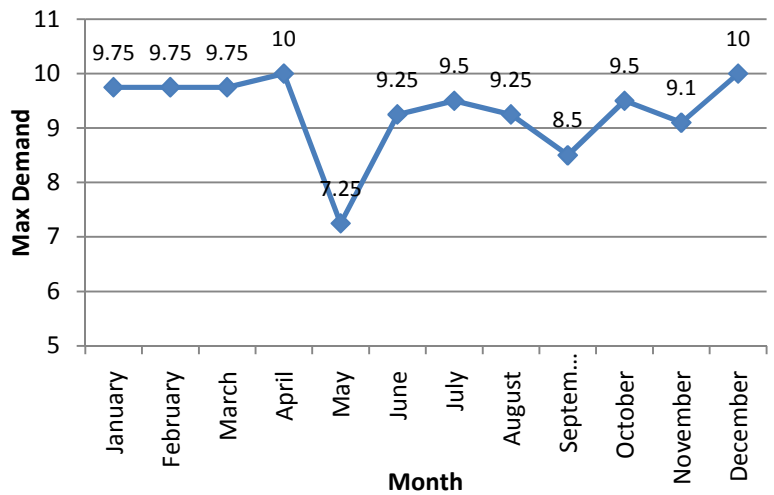


10 kW Wind Turbine Located near Haswell, Colorado Turbine Capacity equals approximately 7300 kilowatt hours per month

Kilowatts Generated by Month for 2008



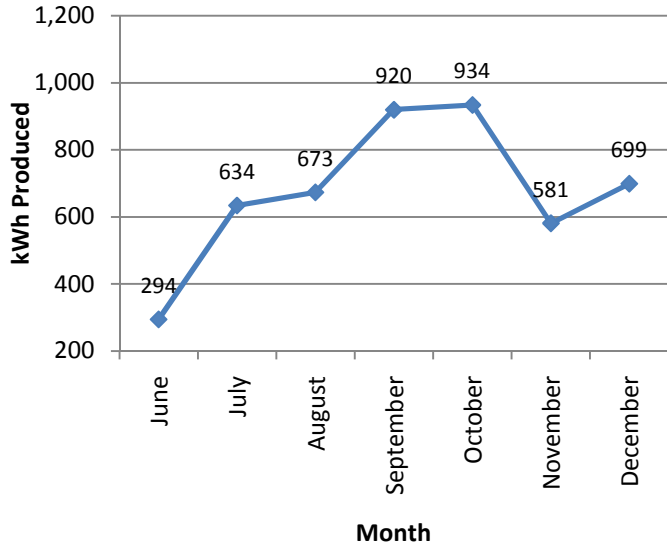
Max Demand Generated by Month for 2008



2007 Wind Turbine Data

10 kW Wind Turbine Located near Haswell, Colorado
Turbine Capacity equals approximately 7300 kilowatt hours per month

Kilowatts Generated by Month for 2007



Max Demand Generated by Month for 2007

